

Universal dry adhesive on fabric carrier

Sigaway Original

For new resilient and textile floor coverings on resilient, textile floor coverings or levelling compounds

Areas of application:

Sigaway Original is a low-emission, double-sided universal dry adhesive on a rayon woven backing for bonding resilient or textile floor coverings to existing resilient floorings or textile substrates.

► Suitable floor coverings:

- PVC/CV flooring
- Rubber flooring in sheets and tiles
- Textile flooring with all common backing types
- Kugelgarn® and Kugelvlies®
- FINETT 7

► Suitable substrates:

- Cement-based/gypsum-based levelling compounds
- Chipboard P3/P5/P7, plywood and MDF panels
- Metal
- Epoxy resin moisture barriers
- PVC/CV flooring
- PUR and epoxy resin coatings
- Artificial stone/terrazzo
- Ceramic flooring
- Textile flooring
- Hot water underfloor heating
- Spray extraction cleaning according to RAL 991 A2
- High loads in commercial and industrial areas

Note: Obtain application consulting for additional combinations from other types of floor covering and substrates.



for new resilient and textile floor coverings

ON resilient and textile floor coverings or levelling compounds

Constituents: Acrylic copolymers, wetting and defoaming agents, plastic film, paper.

Product benefits/properties:

- Quick and easy application
- Floor covering immediately ready for foot traffic and loads
- Suitable for chair castors
- EMICODE EC1 PLUS/Very low-emission

Technical data:

Packaging:	carton
Pack size:	Content is sufficient for 25 m ² – 100 cm x 25 m
Shelf life:	min. 24 months
Colour:	white
Working time:	unlimited
Setting time/curing:	none
Ready for foot traffic:	immediately after bonding
Minimum working temperature:	15 °C at ground level
Load bearing:	immediately after bonding
Seals seams/joints:	immediately after bonding

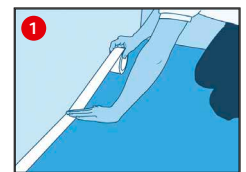
Subfloor preparation:

- ▶ Any existing floor covering to be covered must be bonded over the entire surface.
- ▶ Cut open and bond loose areas or holes, or seal in a piece of floor covering of the same thickness. It is also possible to fill up with levelling compound up to the level of the flooring.
- ▶ The substrate must be sound, level, permanently dry, free of cracks, clean and free of materials that could impair adhesion.
- ▶ Test the substrate in accordance with applicable standards and bulletins and report any deficiencies.
- ▶ Depending on the substrate, floor covering and load, suitable primers and levelling compounds can be found in the UZIN Product Guide. Thoroughly vacuum, prime and smooth surface.
- ▶ Always allow primer and levelling compound to dry well all the way through.
- ▶ Thoroughly clean and degrease aluminium and non-rusting metals; grind out, necessary.
- ▶ Observe the product data sheets of the other products and of the floor coverings that are used. General: The applicable national standards for working with floor coverings (EN, DIN, VOB, OE, SIA or TKB-Merkblatt 12) apply.

Application:

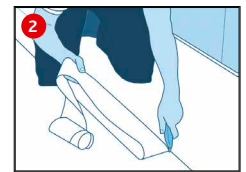
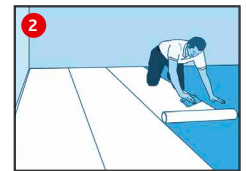
1 Stick SUPERTape 7900 to the floor:

- ▶ Apply a strip of SUPERTape 7900 installation tape on the installation substrate along the edge/wall areas.
 - ▶ Apply two strips next to each other in the area of the joint.
- Attention: Only use plasticizer-resistant SUPERTape 7900.**



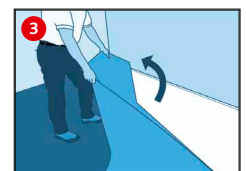
2 Install the Sigaway Original roll:

- ▶ Unroll Sigaway Original in the running direction of the new floor covering – applying slight pressure on the roll – preferable overlapping, rub down well and use a hooked blade to cut back to butt-joint or unroll directly edge to edge (max. 3 mm gap allowed, no overlapping). Do not damage the substrate.
- ▶ Never apply the side covered with protective paper to the subfloor.
- ▶ Sigaway Original may overlap the SUPERTape 7900, but must be cut back to butt joint.
- ▶ Apply the last run of Sigaway Original starting at the wall. Cut back the overlap thus created to butt-joint using the hooked blade. Do not damage the substrate.
- ▶ Unroll only as much Sigaway Original as floor covering is installed on the same day.
- ▶ 2-person procedure: Unroll approx. 1 meter of Sigaway Original and align it precisely in the running direction. The first person walks backwards with the Sigaway Original roll. The second person stands on the unrolled Sigaway Original sheet and brushes it down with the broom.



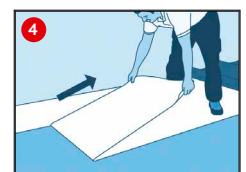
3 Installing the floor covering:

- ▶ Lay out the floor covering and fit approximately.
- ▶ Fold back half of the floor covering run in the running direction.
- ▶ Peel the protective paper off the Sigaway Original and SUPERTape 7900.



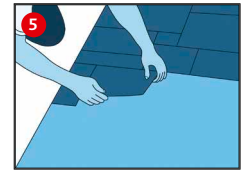
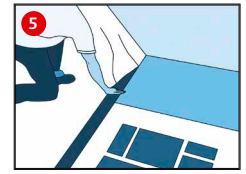
4 Remove the protective paper:

- ▶ Pull the protective paper off the Sigaway Original horizontally and straight up to the folded back floor covering.
- ▶ Cut off the protective paper you have pulled off, leaving 10 cm. Fold the rest of the paper under the folded back floor covering (forming a flap).
- ▶ Put the protective paper in a single pile and roll together (minimises the volume of waste).



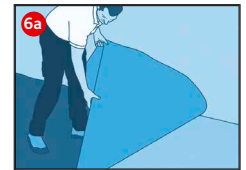
5 Floorings installed as tiles and planks:

- ▶ Textile coverings may only be covered with textile coverings (e.g. carpet tiles).
- ▶ Apply a strip of Contact 85 or U-Tack 90 (carpet skirting tape) to the Sigaway Original with a coarse backing in the seam and edge area of the floor covering. This increases the adhesive strength to the backing.
- ▶ Measure the room and divide into planks/tiles. Mark the starting point of the row of planks/tiles and, if applicable, wall frieze, with a suitable pen (soft pencil or regular DVD marker) on the protective paper.
- ▶ Pull the protective paper off the Sigaway Original horizontally and straight up to the steel rail.
- ▶ Tear off the protective paper along the steel rail at an angle toward the top. The straight line this created serves as reference line of the first row of planks/tiles.
- ▶ Put the protective paper in a single pile and roll together (minimises the volume of waste).
- ▶ Install the planks/tiles along the reference line without pull and tension and press down firmly by hand.
- ▶ Continually pull back the protective paper horizontally and straight. Install the floor covering as described.
- ▶ If the installation process is interrupted, the protective paper can be reapplied as protection for the Sigaway Original.
- ▶ After installation, rub/roll down the whole area crosswise thoroughly.



6a Floorings installed as sheets:

- ▶ Textile flooring may only be covered with textile flooring.
- ▶ Apply a strip of Contact 85 or U-Tack 90 (carpet skirting tape) to the Sigaway Original with a coarse backing in the seam and edge area of the floor covering. This increases the adhesive strength to the backing.
- ▶ Lay the first half of the floor covering free from tension and undulations and rub it down.
- ▶ Fold back the second half of the floor covering and pull off the rest of the protective paper using the flap.
- ▶ Lay the floor covering, rub/roll it down and cut to fit at the edge.



6b Installing sheet coverings with seam:

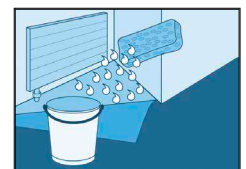
- ▶ Cut the seam according to manufacturer's recommendations before installation. Use a steel rail underneath when making a double cut (never cut through the Sigaway Original). The floor covering seam must not lie on Sigaway Original butt.
 - ▶ Lay out the run with exact fit on the seam.
 - ▶ Fold back half of the sheet
 - ▶ Pull off protective paper horizontally and form a flap.
 - ▶ Install and rub down the first sheet, then
 - ▶ run and fit the second sheet bit by bit to the seam and process.
 - ▶ Rub/roll down thoroughly in crosswise direction.
- Attention: Never use knee kickers and seam clamps!**



Water trick:

Proceed as follows when laying the seam, cutting to shape and when pushing the textile covering under radiators or around columns:

- ▶ Peel the protective paper off the Sigaway Original.
- ▶ Moisten the Sigaway Original with a sponge at the desired point. Using too much water may possibly cause damages to the subfloor. Use only very little water.
- ▶ Slide textile covering to the desired position (aqua-planing effect).
- ▶ Sigaway Original reaches full adhesive strength again as soon as the water has evaporated.
- ▶ Rub down the textile floor covering once more.



Important notes:

1. Adhesive and fabric residues may remain on the covered flooring/substrate when subsequently removing floor covering bonded with Sigaway Original. Sigaway Original is therefore not suitable for use on existing flooring/substrates that are to be reused in their original condition (e.g. as an anti-slip underlay, floor covering, etc.).
2. Allow floor coverings and adhesives to acclimatise sufficiently in the room.
3. PVC/CV coverings and rubber coverings are generally to be welded or grouted.
4. Do not use knee tensioners or seam clamps.

Storage:

Store upright, dry, cool and without exposure to direct sunlight.

For existing substrates to be restored to their original condition, we recommend using products from the Sigan range:

- Calcium sulphate screed (trowelled), levelling compounds → Sigan 1 with Planus
- Screeds (trowelled) → Sigan 1 with Planus
- Chipboard P3/P5/P7 → Sigan 1 with Planus
- Resilient floor covering (PVC, CV, Linoleum) → Sigan 2
- PVC-coated cork floor coverings → Sigan 2
- PUR and epoxy resin coating → Sigan 2
- Wood flooring and laminate → Sigan 3
- Ceramic tiling/Terrazzo → Sigan 2
- Sealed cork floors → Sigan 3
- Marble and natural stone floors (discolouration)
- Relieved stone tiles (reliefs/joint patterns)

UZIN grants a 5-year guarantee on all products listed in the warranted characteristics.

Please observe the generally recognised rules of and technology for floor covering installation the respectively valid national standards (EN, DIN, VOB, OE, SIA, TKB Merkblatt 12) In any case, before processing own adhesive tests are carried out on site.

The warranty is excluded if:

- Sigaway Original outdoors, in operating rooms or used in vehicle construction.
- unusual influences, especially chemical or in a more mechanical way on Sigaway Original.
- Surface tears occur (insufficient substrate strength).
- processing that deviates from the processing instructions/-processing of the (never use Sigaway Original on insert stairs and walls).
- Discolouration occurs due to chemical reactions between floor covering and substrate.
- due to dimensional changes or climatic Changes Joints or warping on the new or Form existing flooring.
- the floor covering has been laid under tension or tension.
- Moisture is acting on Sigaway Original.
- the installation has been carried out below 15°C (on the floor).
- Sigaway Original in areas with increased thermal load (e.g. conservatories) is used.
- a trial application has been carried out.

Health and safety, environmental protection:

The product does not require any special labour protection measures. For reasons of working hygiene, we recommend avoiding eating, drinking and smoking during application of this product. Store out of the reach of children.

For more information refer to www.uzin.de or contact +49 (0)731 4097-0

Disposal:

Sleeves and carton packaging free from residues can be recycled. Material residues can be disposed of with domestic waste.