

High-performance adhesive for larger areas (special foil carrier)

Sigan Elements Plus

Future removal
with no residues

Metal reinforced adhesive tape for rapidly installing new PVC floor coverings onto levelling compounds, chipboard and metal

Areas of application:

Dimensionally stabilising, metal-reinforced special adhesive system. Double-sided adhesive, for installing LVT and PVC tile onto levelling compounds, chipboard and metal. Once installed the floor coverings can be removed at a later time without residues, guaranteed! Suitable for areas of any size. Sigan Elements Plus is resistant to cleaning agents, spray extraction cleaning and professional vacuum cleaners (although pooled water should be avoided). Sigan Elements Plus is also suitable for underfloor heating and permits usage under high loads and traffic such as chair castors. For interior use only.

► Suitable for*:

Resilient floor coverings:

- Luxury Vinyl Tiles up to 3.2 mm
- PVC tile products

Textile flooring:

- Barrier matting with PVC backing
- Flotex

► Suitable on*:

Only use Sigan Elements Plus with Planus special primer.

- Cementitious levelling compound (sanded)
- Calcium sulphate levelling compound (dried and sanded according to manufacturer's recommendation)
- Epoxy resin vapour barrier
- Chipboard P3/P5/P7, plywood and MDF boards (level butts/joints with low-slump cementitious levelling compound)
- UZIN RenoTop PLUS
- Aluminium and metal
- PUR levelling compound (e.g. UZIN KR 410)

Note: For additional combinations of floor covering and subfloor obtain technical advice.

* See important notes



for < Luxury Vinyl Tiles and PVC tiles

ON > Levelling compounds, Chipboard, Metal

Ingredients: Metal-reinforced special film carrier, acrylic copolymers, wetting and defoaming agents, paper.

Product features & properties:

- Dimensionally stabilising
- Quick and easy installation
- Floor covering immediately ready for foot traffic and loading
- Immediately weldable
- PVC luxury floor covering and PVC tiles can be installed without joints
- Future removal without residues
- Solvent-free
- Does not dry out or become brittle
- EMICODE EC 1 PLUS / Very low-emission

Technical specifications:

Packaging:	Carton
Packaging content:	Sigan Elements Plus: 75 cm x 25 m Sigan Elements Plus Tape: 5 cm x 25 m
Shelf life:	min. 2 years
Colour:	silver / grey
Substrate temperature:	min. 15 °C
Open time:	none
Working time:	unlimited
Load application:	immediately after installation
Welding/joining seams:	immediately after installation

Preparation:

- ▶ The substrate must be sound, flat, permanently dry, free of cracks, clean and free of materials that could impair adhesion.
- ▶ Test the substrate in accordance with applicable standards and bulletins and report any deficiencies.
- ▶ Thoroughly vacuum the substrate and then, prime and smooth the surface.
- ▶ Depending on the substrate, and floor covering, suitable primers and levelling compounds can be taken from the UZIN product range.
- ▶ Always allow primer and levelling compound to dry out.
- ▶ Thoroughly degrease/clean aluminium and non-rusting metals. Allow PU-based smoothing compounds to dry for a minimum of three days before applying Planus primer. Planus must be allowed to dry overnight.
- ▶ Observe the product data sheets of the other UZIN products as well as the floor coverings used.

Application:

Perfect bonding with Sigan and removal without residues is only guaranteed with Planus. Do not use any other primer!

Apply special Planus primer:

- ▶ Clean subfloor with industrial vacuum cleaner.
- ▶ Shake the Planus well and pour the liquid undiluted into clean bucket.
- ▶ Apply undiluted Planus with a fine-pore UZIN foam roller, evenly and thinly, applying cross-wise. Avoid the formation of bubbles or drops and avoid grooves. In the case of wooden materials, apply twice with a nylon plush roller. After drying, the surface must show a thin film (slight sheen).
- ▶ Allow to dry for at least 2 hours in a well ventilated area. Planus must be completely dried all the way through. Setting time is subject to ventilation, indoor climate and substrate. Drying time may be up to 4 hours on calcium sulphate-based levelling compounds.
- ▶ Do not allow floor covering to acclimatize on Planus.
- ▶ Trial bonding: Always perform trial bonding. Rub Sigan Elements Plus firmly onto the substrate. If Sigan Elements Plus detaches from the substrate, apply Planus again and repeat trial bonding.
- ▶ Unpack the floor covering in small stacks and allow to acclimatise for 48 hours and according to the manufacture's recommendations. Allow Sigan Elements Plus to acclimatise for at least 24 hours before the floor is installed.

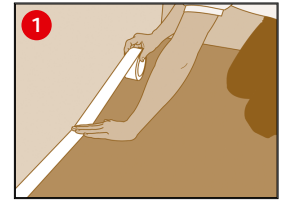


**Planus special primer
required**

Application:

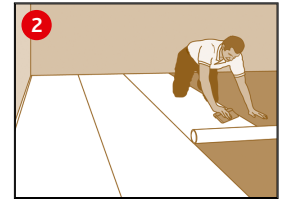
1 Installing 50 mm Sigan Elements Plus Tape:

- ▶ Apply Sigan Elements Plus Tape along walls and doors, a) to compensate for uneven walls, (b) for increased adhesive strength in the edge zones, c) for bonding at difficult to access areas.
Attention: Use only the Sigan Elements Plus Tape enclosed (removable without residues!).
- ▶ Do not pull off the protective paper yet.
- ▶ Do not overlap the Sigan Elements Plus tape, but mount edge to edge, or cut back to a butt-joint where overlapping.

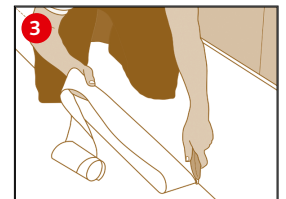


2 Installing 750 mm Sigan Elements Plus Tape:

- ▶ Install Sigan Elements Plus in the running direction of the new floor covering, preferably overlapping, rub down well and then cut back to the joint using a hooked knife, or roll out edge to edge directly (max. 3 mm gap allowed, no overlapping). Do not damage the substrate.
Attention: Never apply the grey matted side (covered with protective paper) onto the subfloor.
- ▶ Sigan Elements Plus may overlap Sigan Elements Plus Tape but must be cut back to butt-joint.
- ▶ Only roll out the same amount of Sigan Elements Plus as the amount of floor covering that will be installed on the same day.



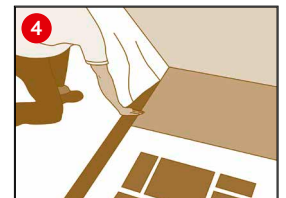
- ### 3
- ▶ Install the last run of Sigan Elements plus starting from the wall. Cut back the resulting overlap to fit edge-to-edge using a hooked knife. Do not damage the substrate while doing this.
 - ▶ Wrap any remaining Sigan Elements Plus roll with protective paper (edge protection and protection against dust).



4 Installing the floor covering:

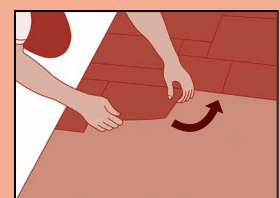
Luxury Vinyl Tiles and PVC tiles:

- ▶ Measure the room, divide into planks/tiles. Mark the starting point of the row of planks/tiles and, if applicable, wall frieze, with a suitable pen (soft pencil or regular DVD marker) on the protective paper.
- ▶ Place a steel rail along the measuring points and align.
- ▶ Pull the protective paper away from the Sigan Elements Plus horizontally and straight up to the steel rail.
- ▶ Tear off the protective paper along the steel rail at an angle toward the top. The straight line this created serves as reference line of the first row of planks/tiles.
- ▶ Stack the protective paper and roll together (minimises the waste volume).
- ▶ Install the planks/tiles along the reference line without stressing and press down firmly by hand.
- ▶ Continually pull back the protective paper horizontally and straight. Install the floor covering as described. If the installation process is interrupted, the protective paper can be reapplied as protection for the Sigan Elements Plus.
- ▶ After installation, rub/roll down firmly crosswise over the whole area.



Sigan: Removing floor covering without residues – without damaging the substrate.

- ▶ Carefully detach tiles and planks from Sigan (cut into strips first if necessary); do not damage the substrate!
- ▶ Pull off Sigan at a flat angle after the complete removal of the tiles or planks. No adhesive residues will remain on the substrate when using Sigan together with Planus! The floor covering removed cannot be reused.
- ▶ Before any further laying vacuum the subfloor before installing Sigan again. If necessary, apply special primer Planus and allow to dry well. Now install the new floor covering with Sigan.



Important notes:

Store in the standing position in a dry and cool place, away from direct sunlight. Rewrap opened rolls in protective paper.

- ▶ PVC tiles and panels as well as textile floor covering with PVC backing that meet the dimensional changes according to EN 434 or EN ISO 23999 are suitable.
- ▶ PVC tiles (up to 65 × 65 cm) and PVC luxury floor coverings with respective dimensional change characteristics can be installed without jointing/welding.
- ▶ Only PVC luxury floor coverings and PVC tiles without optically detectable inherent tension or bulging may be bonded.
- ▶ Only use Sigán Elements Plus onto metals pretreated with anti-rust primer.
- ▶ With chipboard P3/P5/P7, plywood and MDF boards level butts and joints with low-slump cementitious levelling compound.
- ▶ When installing onto UZIN RenoTop PLUS we recommend the use of 1-C PU based Primer (e. g. UZIN PE 414 Turbo) as a skim coat to prevent swellings on the seams.
- ▶ Allow PU-based smoothing compounds to dry for a minimum of three days before applying Planus primer. Planus must be allowed to dry overnight.
- ▶ Rising humidity from the subfloor can't pass through the Sigán Elements Plus foil carrier. Enclosed moisture could cause damage to the construction underneath.
- ▶ **Further substrates:**
 - Textile floor covering → Sigaway
 - Smooth, used substrates → Sigán Elements

Protection of the Workplace and the Environment:

The product does not require any special labour protection measures. For reasons of working hygiene, we recommend avoiding eating, drinking and smoking during processing of this product. Store out of the reach of children.

For more information refer to www.uzin.com or contact +49 731 4097-0

Disposal:

Empty shells and the cardboard packaging can be recycled. Material remnants can be disposed of as household waste.

Warranty:

UZIN grants a 5-year warranty for all properties claimed in the processing instructions.

Sigán Elements Plus complies with VOB Part C, Pt. 2.7 Adhesives: "They form a solid and permanent connection and neither affect the floor covering nor the substrate and do not cause any nuisance through odours after installation".

• Follow the generally acknowledged rules of the trade and of technology for the installation of floor covering of the respective applicable standards (EN, DIN, VOB, OE, SIA, Technical Bulletin TKB-12) Suitable bonding tests must be performed at any rate on site before processing.

The warranty becomes void if:

- Sigán Elements Plus is used for exterior applications, in operating theatres or automotive manufacturing.
- Unusual influences, and in particular those of a chemical or mechanical nature, affect the product.
- In case of any utilisation or processing that deviates from the laying instructions (never use Sigán Elements on stairs and walls).
- Discolouration occurs due to chemical reactions between floor covering and substrate.
- If joints or warping develops due to dimensional changes on the floor covering.
- The floor covering was installed stretched and under tension.
- Dampness affects Sigán Elements.
- Installation was performed below 15 °C (on the floor!).
- Sigán Elements Plus is used in areas with increased thermal loads (e.g. conservatories).
- no adhesive trials are carried out.